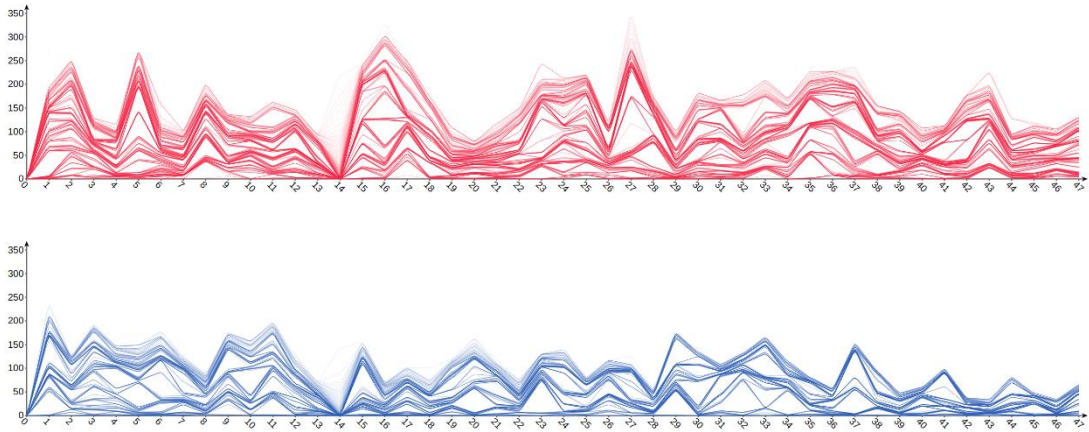


# Weekly Report

## 1 Done

### 1.1 Project with Chuan

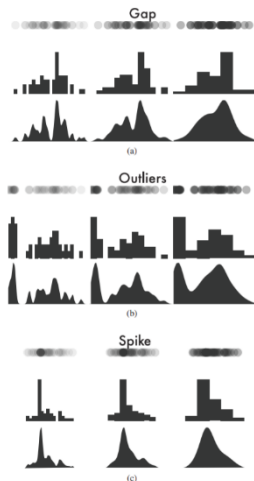


I implemented the effects based on front end. Now, we can sort lines by the values on different time stamps thanks to interactions. However, the efficiency is not satisfied. We still need some improvements to meet the need of interaction. Or, we can find an order that can display all features.

### 1.2 Paper Reading

#### *Looks Good To Me: Visualizations As Sanity Checks*

This study compares the performance of density plots (line chart), histograms and dot plots across conditions, as the specifics, like KDE.



Density plots have relatively high performance to show flaws, like gaps, outliers, and spikes. And histograms have the worst performance. Dot plots, under reasonable settings, have direct and unambiguous visual signatures for each data flaws.